

4TH STREET/PRATER WAY BUS RAPID TRANSIT PROJECT

www.4thPrater.com

Warren Call, P.E.

Jeff Wilbrecht, P.E.

Project Managers

Regional Transportation Commission
of Washoe County



REGIONAL TRANSPORTATION COMMISSION

Metropolitan Planning • Engineering & Construction • Public Transportation & Operations

Metropolitan Planning Organization of Washoe County, Nevada



REGIONAL TRANSPORTATION COMMISSION OF WASHOE COUNTY

- *Metropolitan Planning Organization*
- *Transit Provider*
- *Regional Road Builder*



CORRIDOR PLANNING INITIATED

Began with corridor planning process

- Reno & Sparks identify 4th/Prater as a priority
- Extensive community outreach



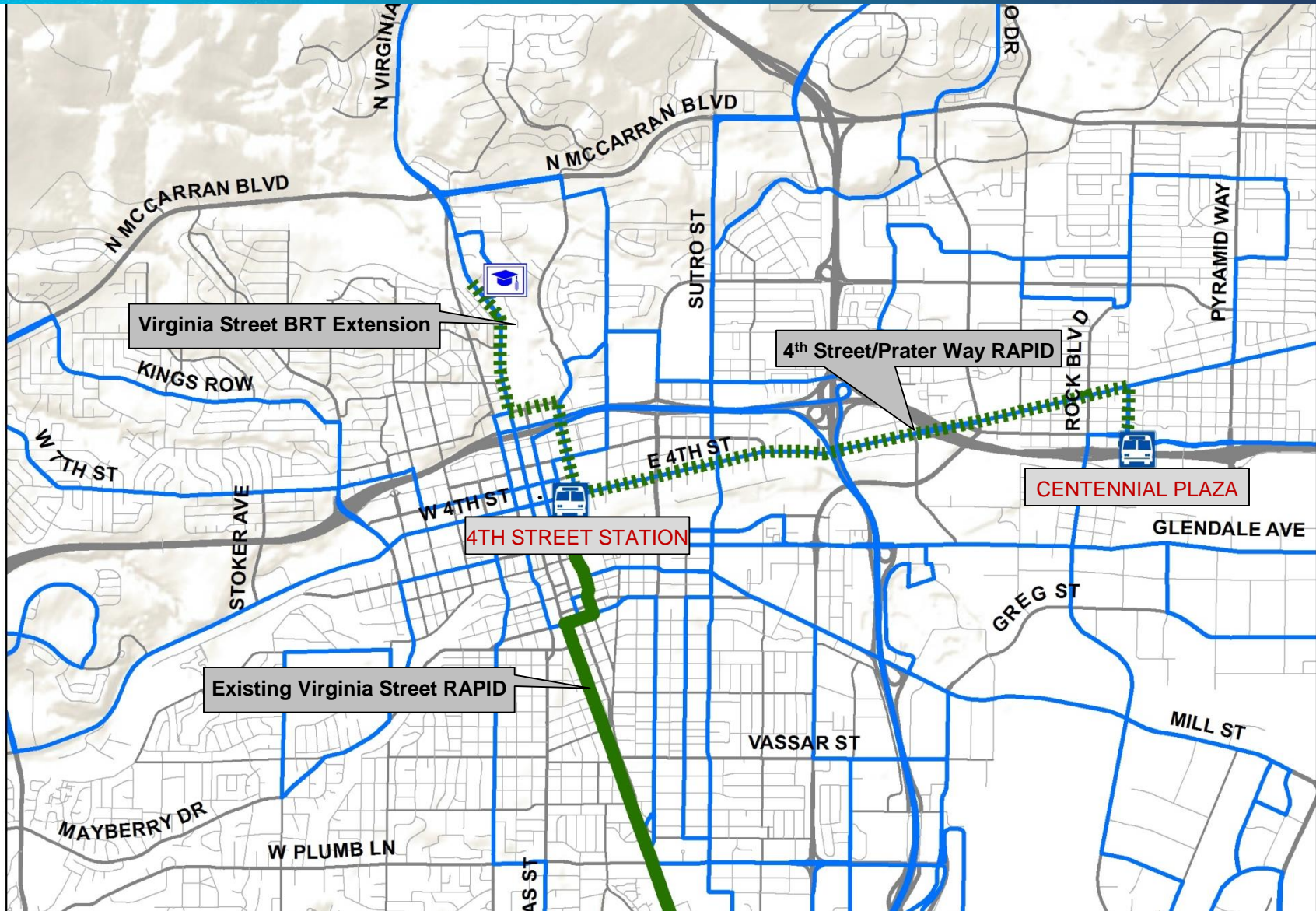
PROJECT INCLUDED IN 2035 REGIONAL TRANSPORTATION PLAN

2035 RTP Guiding Principles

- *Safe & Healthy Communities*
- *Economic Development & Diversification*
- *Sustainability*
- *Increased Travel Choices*

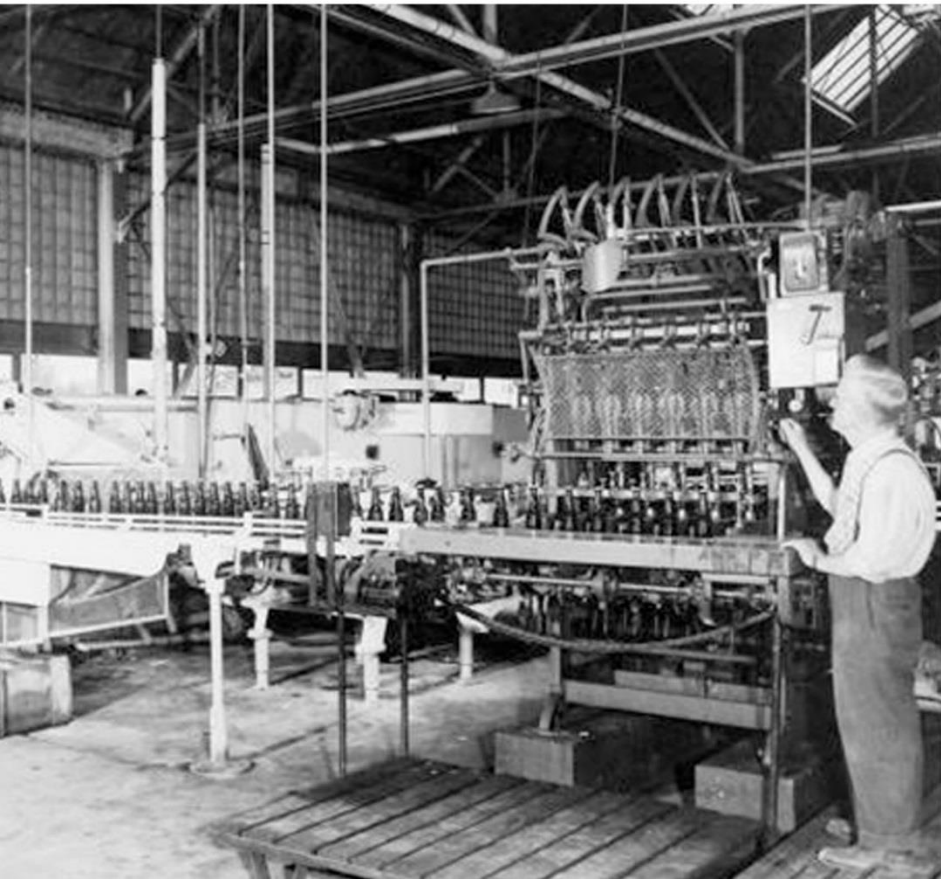


Project Area: 4th Street at Evans Avenue in Reno to RTC CENTENNIAL PLAZA in Sparks, Nevada



IMPORTANT FOR EARLY MANUFACTURING

- Metal working
- Bottling/Breweries



PART OF THE HISTORIC LINCOLN HIGHWAY

Popular route through 1960s



Ray's Drive In

U. S. 40 Between Reno and Sparks, Nevada
IN THE HEART OF THE MOTEL DISTRICT
27 MOTELS NEARBY



BYPASSED BY I-80

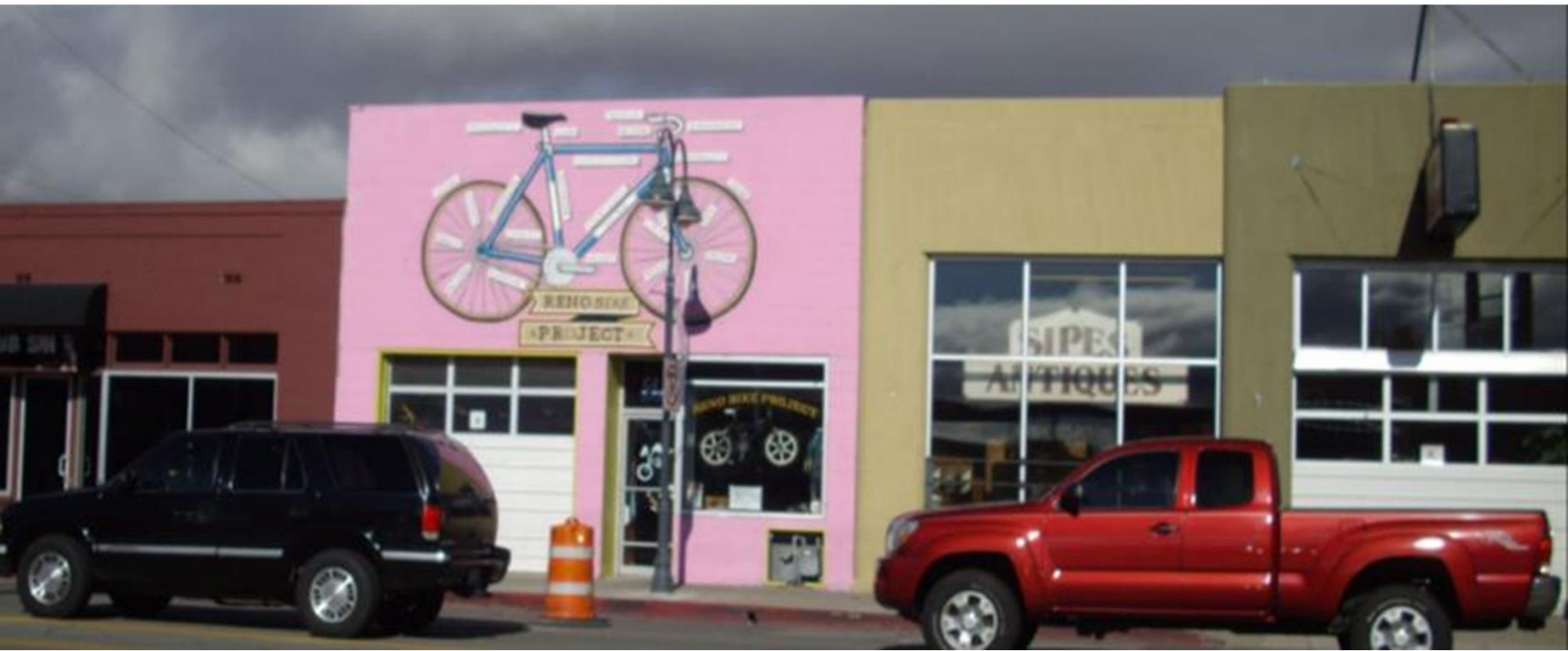
- Experienced disinvestment
- Infrastructure deteriorated
- Population & development shifted to suburban areas





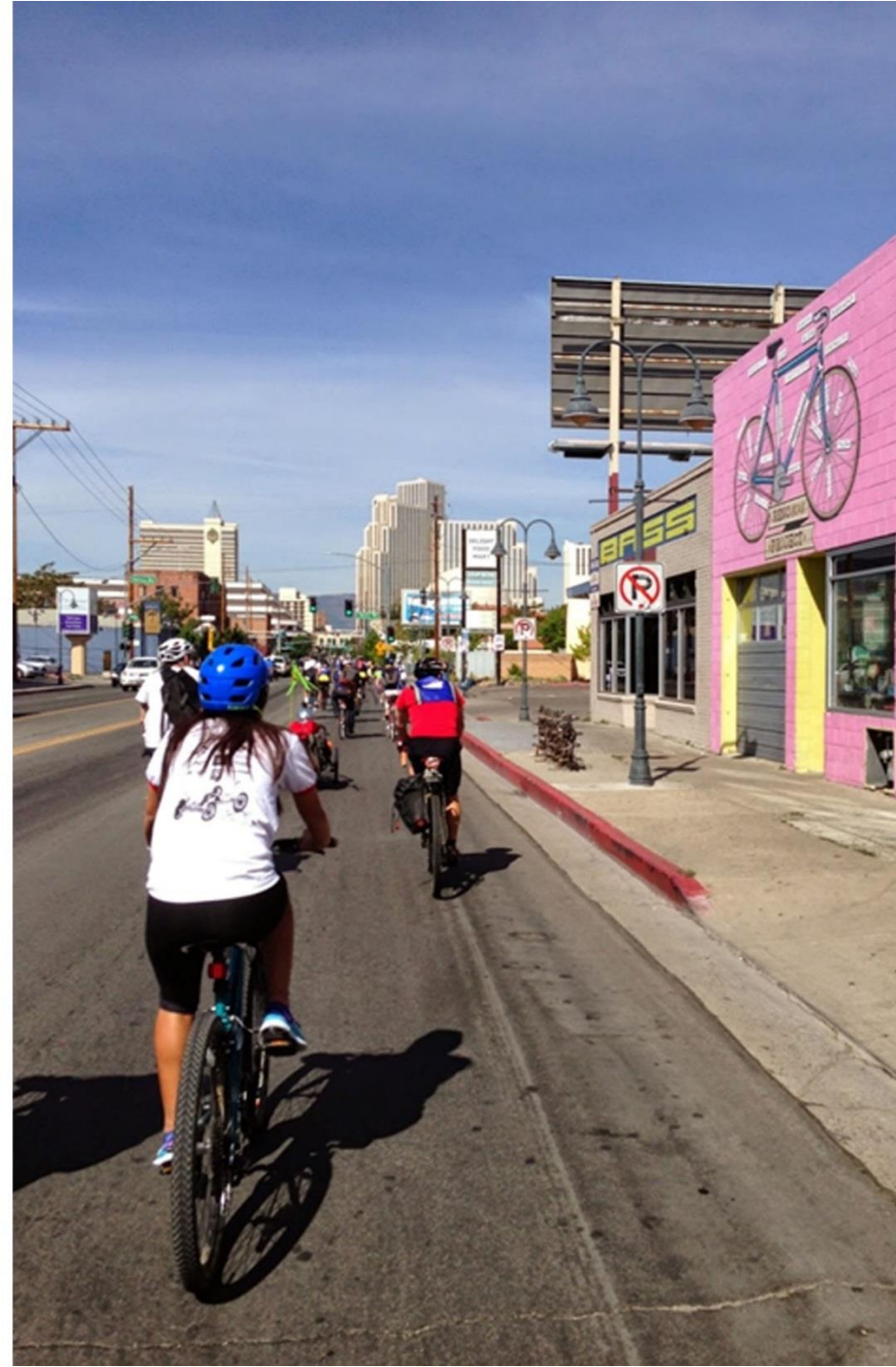
RENEWED INTEREST

- Emergence as an industrial arts district
- Low property values attract entrepreneurs



ALTERNATIVE MODE CORRIDOR

- Transit Oriented Development Zone
- 34% alternative mode use (transit, walking & biking)



COMMUNITY ENGAGEMENT

- Series of planning workshops
- Online participation options
- Social media
- Stakeholder meetings
- Outreach process continues today



4TH/PRATER HISTORY PROJECT

- Oral history interviews with 40 residents/business owners
- Historic themes incorporated into stations
- Website, photos, and interviews
- Preserving and sharing the stories of the corridor for the community



HISTORY PROJECT

4th Street | Prater Way

The Corridor Story ▾

Oral Histories

ONE Home



Explore the historic route of the Lincoln Highway and U.S. 40 in Reno and Sparks through stories, images, and voices.

A partnership of Nevada Humanities and RTC of Washoe County

<http://4thprater.onlinenevada.org/>

PROJECT INCLUDES

- New BRT route
- 4 new zero emission electric buses
- Sidewalk upgrades
- Undergrounding of utilities
- Bike lanes



BEFORE

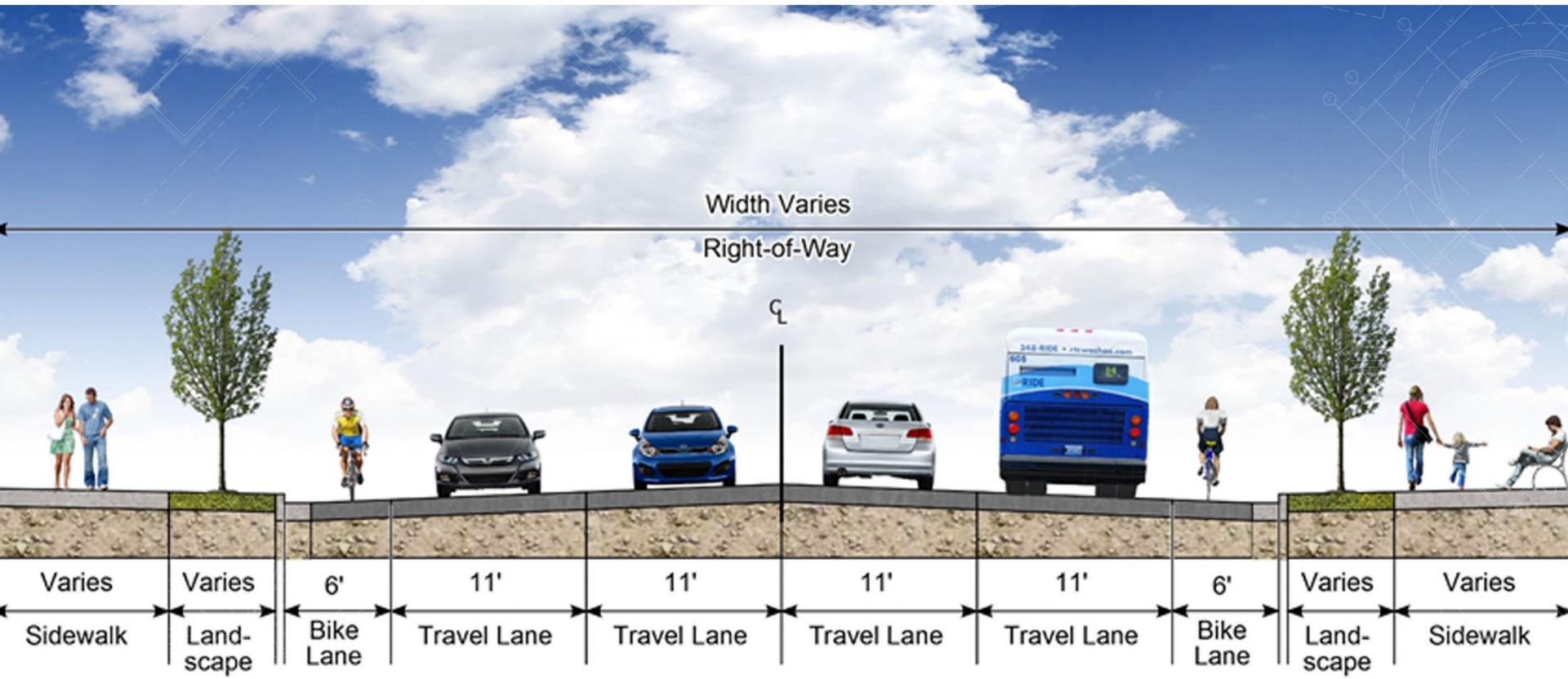


AFTER



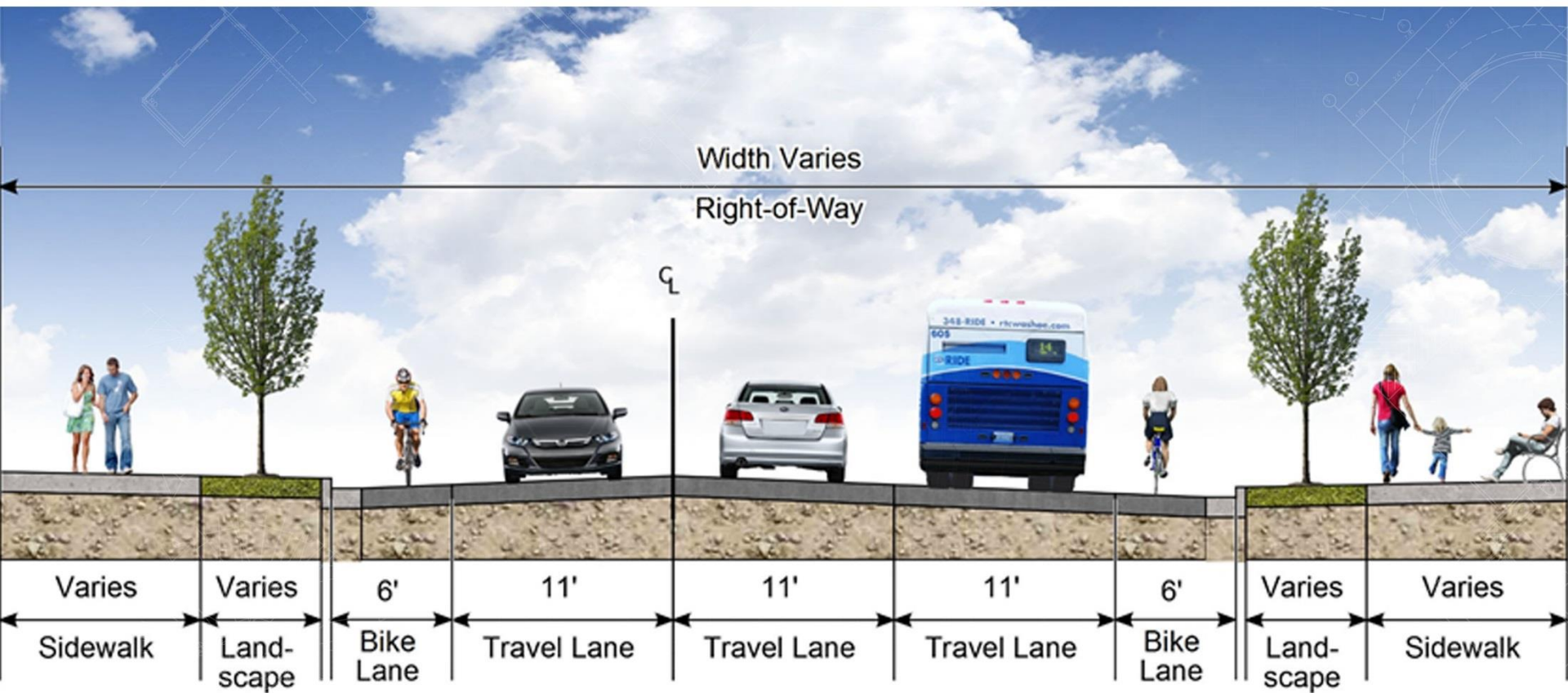
4TH STREET/PRATER WAY BRT PROJECT

Typical Section
(Evans Avenue to Valley
Road)



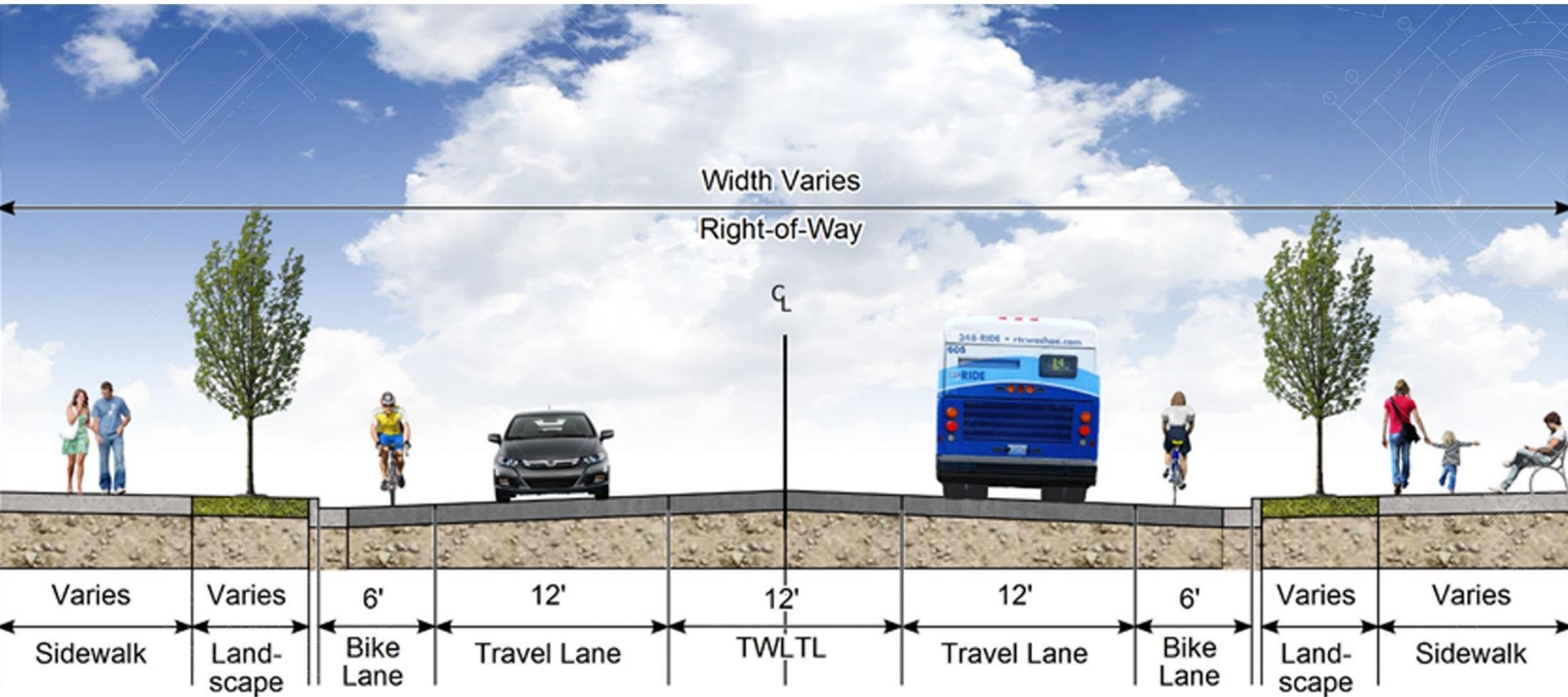
4TH STREET/PRATER WAY BRT PROJECT

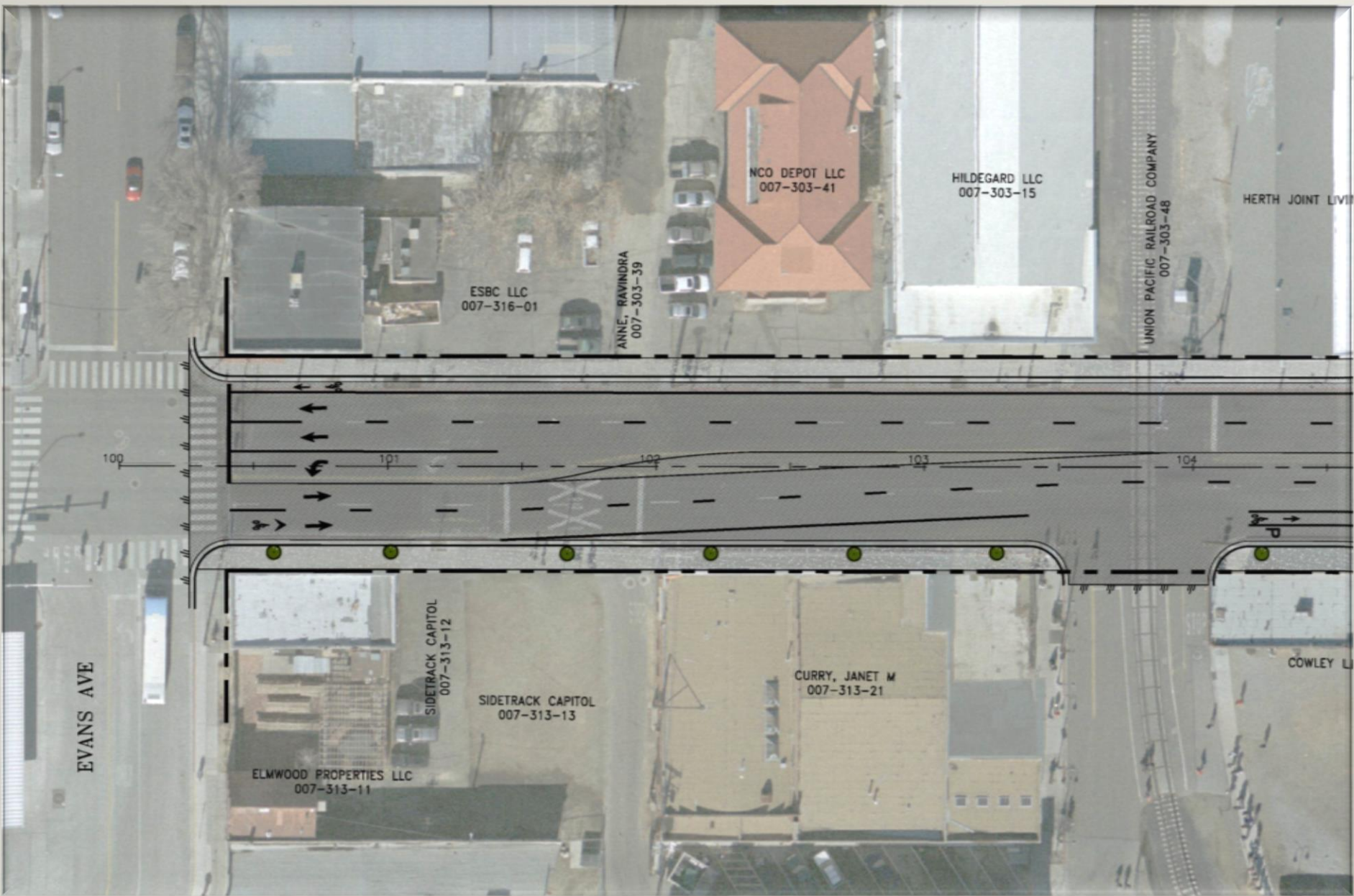
Typical Section
(Valley Road to Sutro Street)



4TH STREET/PRATER WAY BRT PROJECT

Typical Section
(Sutro Street to Pyramid
Way)





Evans Avenue Future Lane Configuration



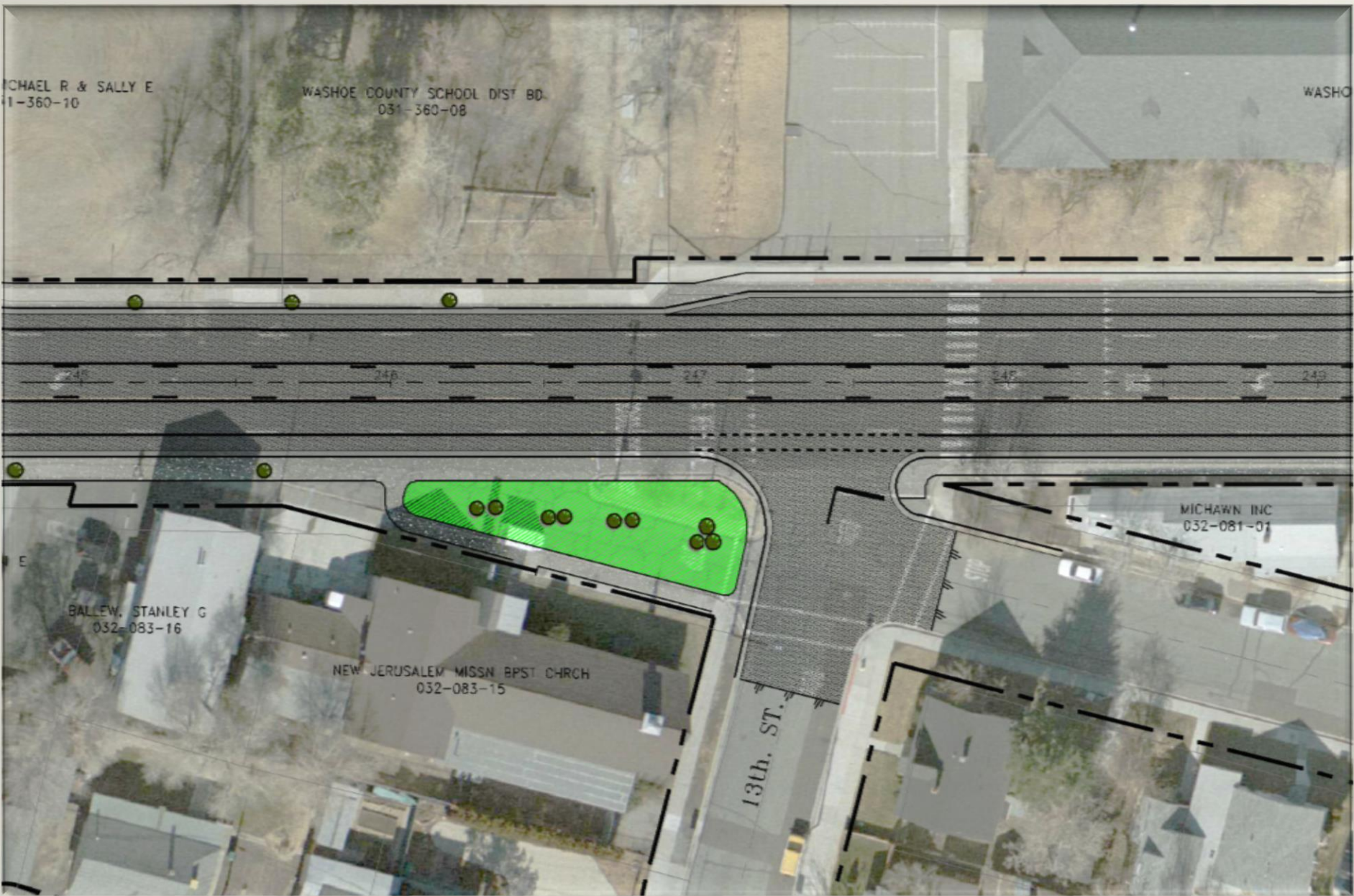
Quincy/Sutro Area Future Lane Configuration



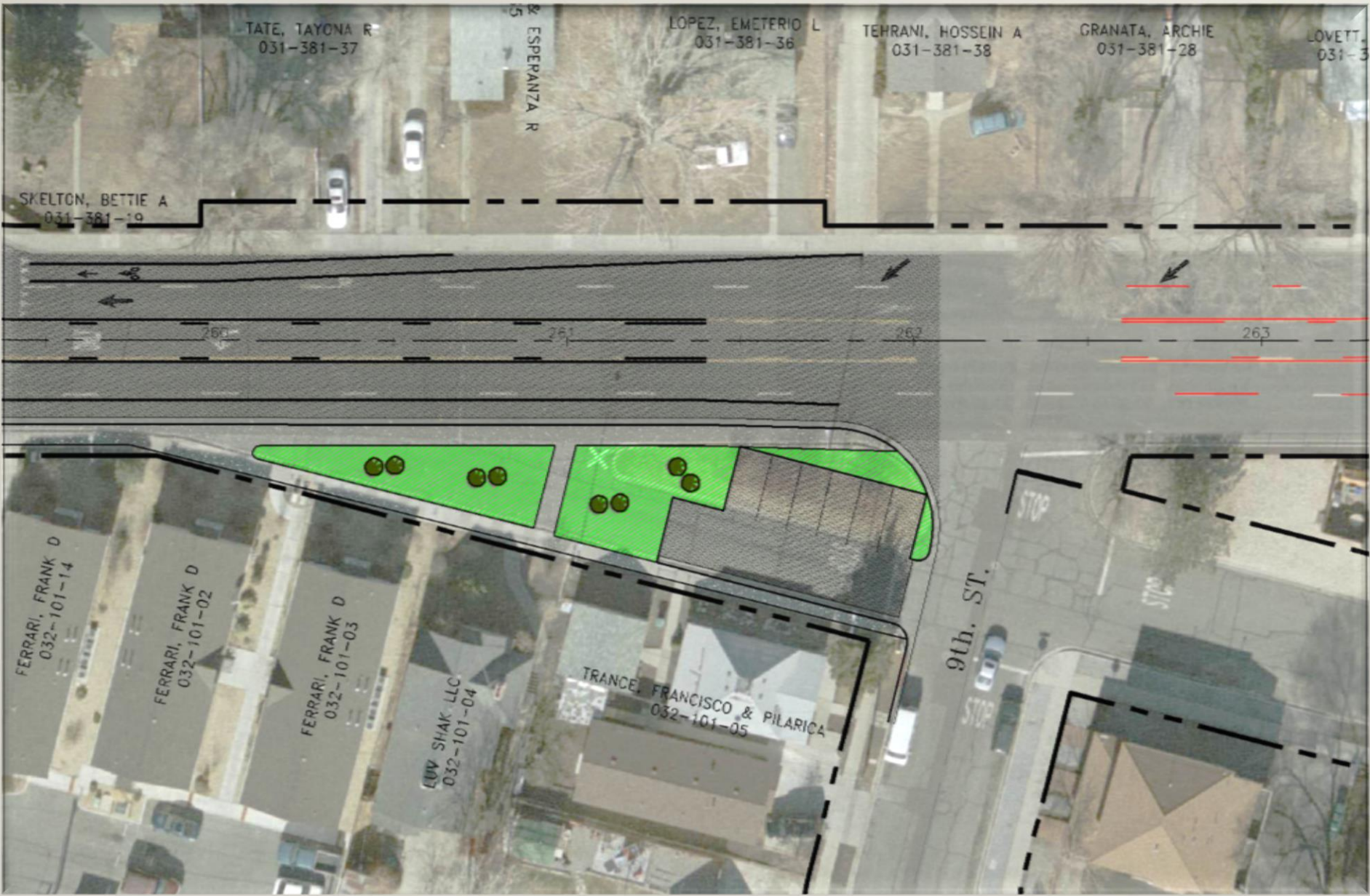
Business Parking



Victorian Avenue Intersection



13th Street Proposed Configuration



9th Street Proposed Configuration

CONCEPT ADOPTED

- 2012- Planning study approved
- 2013 - Included in RTP
- 2014 - NEPA & preliminary design completed



FUNDING AND IMPLEMENTATION

- Funded through TIGER grant (\$16,000,000), local revenues, CMAQ, and Small Starts grant (\$6,250,000)
- Construction began January 2017
- Revenue service begins March 2019



Transit Station Rendering

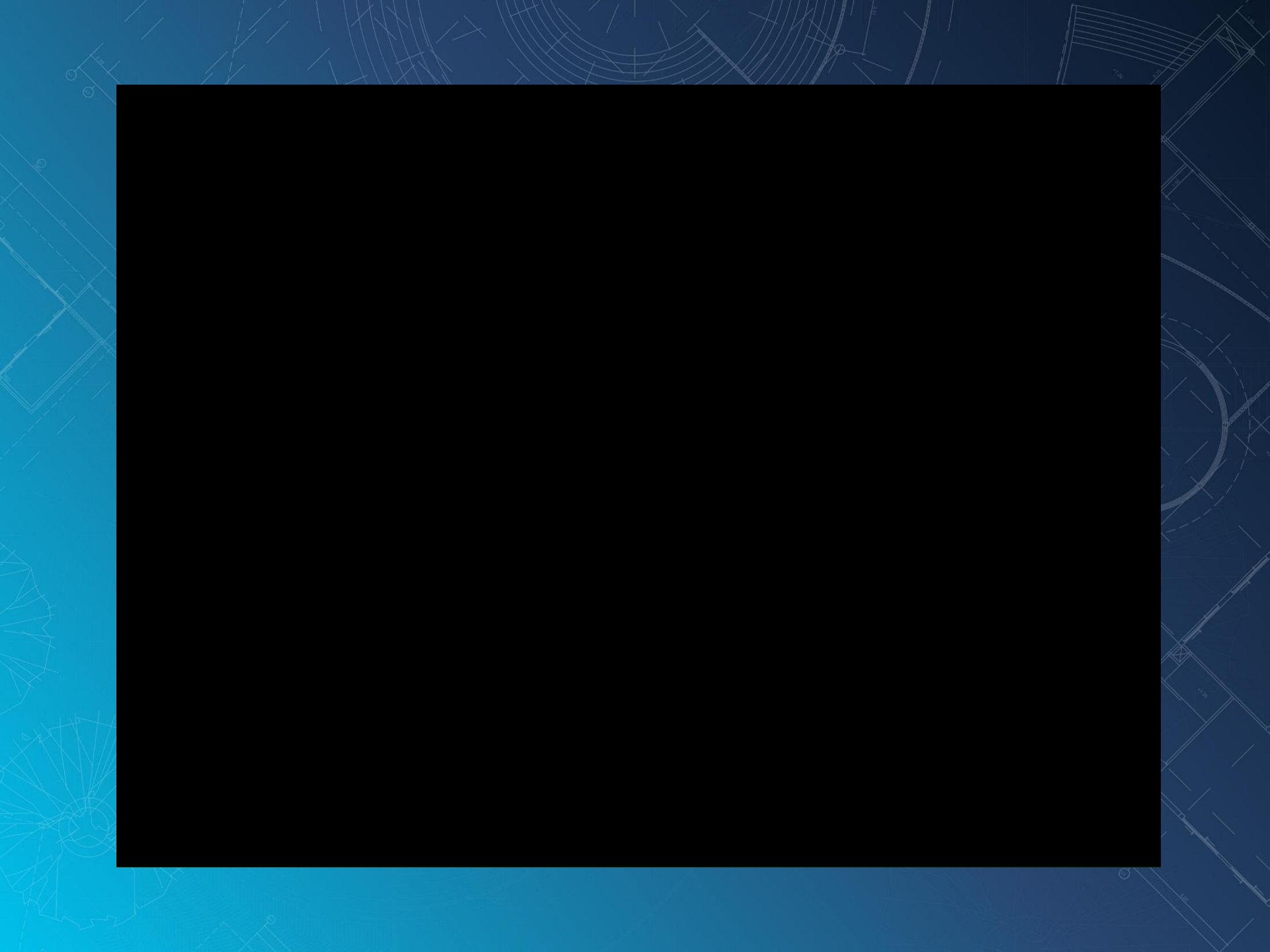
Bringing the Past into the Future



4TH/PRATER HISTORY PROJECT









Contact Information

Project Manager

Warren Call, P.E.

Jeff Wilbrecht, P.E.

Regional Transportation

wcall@rtcwashtn.com 775-348-0171

jwilbrecht@rtcwashtn.com www.4thPrater.com

Your RTC. Our Community.

